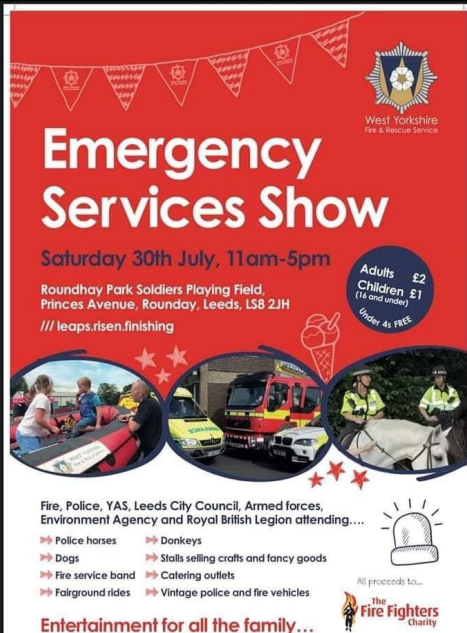


## Summer holidays 2021

### Additional summer holiday activities



Emergency Services show  
Saturday 30<sup>th</sup> July 11am-5pm  
Roundhay Park Soldiers Playing Field  
Princes Avenue, Roundhay, Leeds, LS8 2JH



Breeze in the park  
Times: 11am to 12pm (relaxed session)  
12pm to 2:30pm & 3pm to 5:30pm (open session)  
Tuesday 28<sup>th</sup> July – East Ardsley  
East Ardsley Recreation Ground  
Main Street  
WF3 2AP  
Friday 5<sup>th</sup> August – Beeston  
Cross Flatss Park, Beeston LS117BQ  
Wednesday 10<sup>th</sup> August – Kirkstall  
Kirkstall Abbey  
Abbey Road  
LS5 3EH  
Thursday 18<sup>th</sup> August – Bramhope  
West Park Rugby Club  
The Sycamores  
LS16 9JR

## #Healthy Holidays

DJ School - 26th July, 2nd & 9th August.  
Ping Pong - 27th July & 1st September.  
Graffiti - 28th July.  
Fun Sports Day - 1st August.  
Season Well - 3rd, 10th, 24th & 31st August.  
Family Baking - 4th August.  
Yoga - 8th & 17th August.  
Drama - 11th August.  
Mini Life Savers - 15th August.  
Dance - 18th August.  
Coding - 16th, 23rd & 30th August.  
Karate - 22nd & 25th August.  
Family Day Out - 26th August.

Priority booking given to children in receipt of  
benefits related free school meals.

Healthy  
Holidays  
Fund

Leeds  
Community  
Foundation

Leeds  
City Council

Department  
for Education

## Healthy Holidays Activity session

### Contact

healthyholidays@theoldfirestationgipion.org.uk



**LEEDS WEEKEND CARE ASSOCIATION**

# SUMMER FUN DAY

**VINE, Foxcroft Close, LS6 3NT**  
**Thursday 28th July**

**RAPIDE ENTERTAINMENT - (11am - 3pm)**  
**BOOMCHIKKABOOM - (11am - 1pm)**  
**DAZL - (12pm - 2pm)**  
**ANIMAL CLUB - (12:30pm - 3:30pm)**  
**PROJECT 52 - (1pm - 4pm)**

**ALL DAY**

**FACE PAINTS BY PEEKABOO**  
**HERD FARM CLIMBING WALLS**  
**BOUNCY CASTLES**  
**FUN FAIR GAMES**  
**STALLS**

## Leeds Weekend Care Association's Summer Fun Day



## LEARNING DISABILITY SUPER LEAGUE SESSIONS THIS SUMMER!

29TH JULY, 12TH AUGUST AND 26TH AUGUST - FRIDAYS 3-4PM

LEEDS RUGBY ACADEMY, BRIDGE ROAD, LEEDS, LS5 3BW  
TO REGISTER YOUR INTEREST PLEASE CONTACT  
ED.BATES@LEEDSRHINOSFOUNDATION.ORG



## [Learning Disability Super League \(LDSL\) - Leeds Rhinos Foundation](#)

<div data-bbox="145 280 252 389"> </div> <div data-bbox="268 291 469 380"> <p><b>Canal &amp; River Trust</b> Making life better by water</p> </div> <div data-bbox="585 280 767 344"> </div> <div data-bbox="145 423 683 546"> <h2>Leeds Waterfront Festival: Autism &amp; Neurodiverse Friendly Event</h2> </div> <div data-bbox="145 548 724 627"> <p>Join us by the water for an amazing day specially designed to be autism, neurodiverse and learning disability friendly. The day will include free: canoeing sessions, have a go warrior training, stone masonry workshops, drama walks, arts &amp; crafts</p> </div> <div data-bbox="145 633 399 676"> <p><b>Friday 29 July, 11am-4pm</b> <b>Armouries Square, Leeds Dock</b></p> </div> <div data-bbox="145 683 679 703"> <p>Come along for the photography competition, waterway scavenger hunt and more!</p> </div> <div data-bbox="145 716 414 757"> <p>For more information: <a href="http://www.leedsautism.org.uk/events">www.leedsautism.org.uk/events</a></p> </div> <div data-bbox="110 759 802 1106"> </div> <div data-bbox="481 1084 767 1140"> <p>Enjoy. Volunteer. Donate <a href="http://canalrivertrust.org.uk">canalrivertrust.org.uk</a></p> </div> <div data-bbox="145 1133 378 1155"> <p><b>Making life better by water</b></p> </div> <div data-bbox="145 1155 469 1196"> <p>Canal &amp; River Trust is the charity that works with communities to transform their local canals and rivers, creating places and spaces that can be enjoyed by everyone, every day.</p> </div> <div data-bbox="644 1178 767 1196"> <p>Charity No. 1146792</p> </div>	<div data-bbox="833 248 1370 322"> <h3>Leeds Waterfront Festival Autism and Neurodiverse Friendly Event</h3> </div>
--	---